

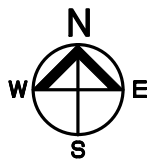
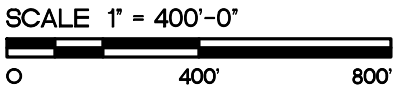
**JUNIOR VARSITY BASEBALL /  
SOFTBALL FIELD**

**AUDITORIUM /  
STORM SHELTER**

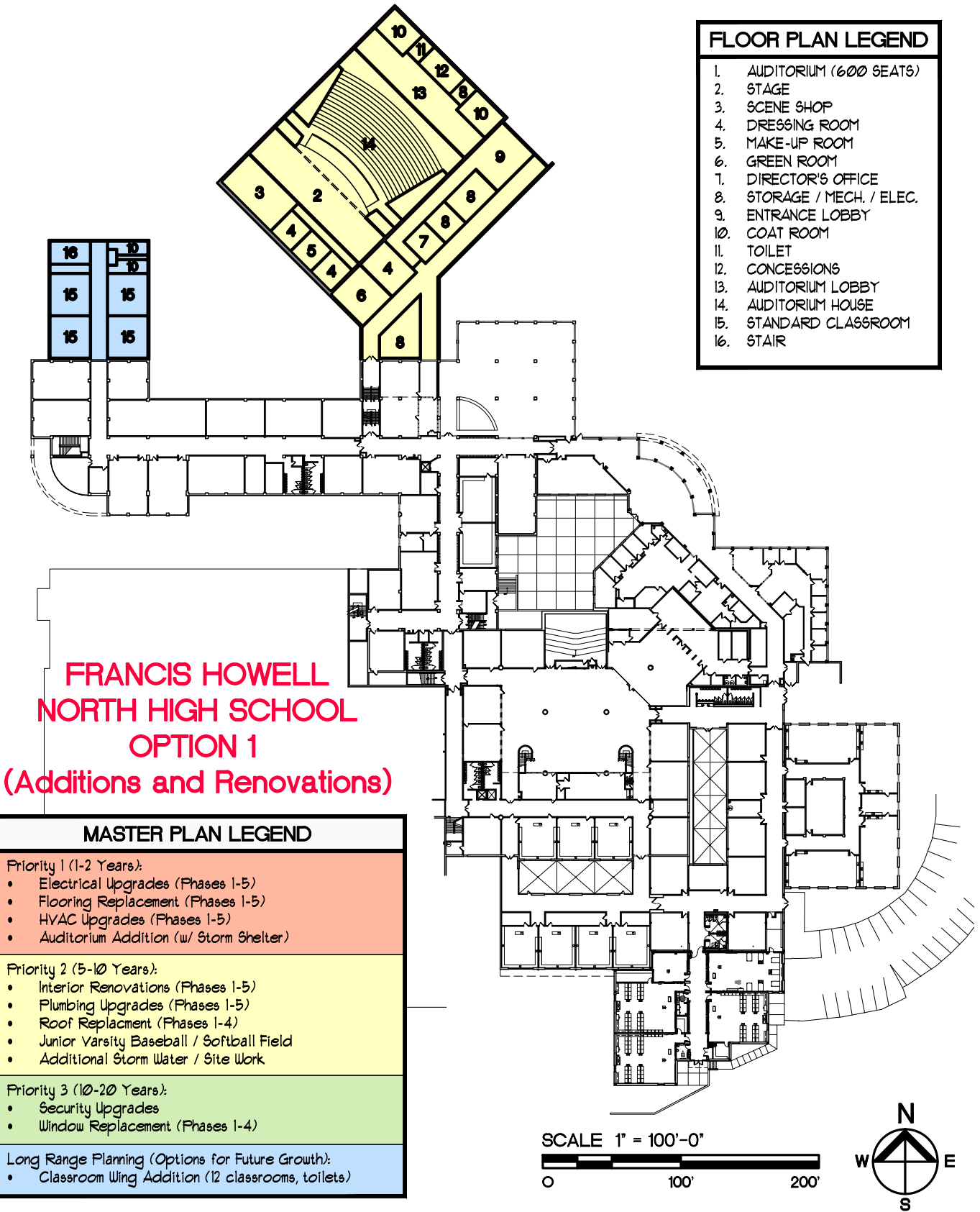
**CLASSROOM  
ADDITION**

MASTER PLAN LEGEND	
Priority 1 (1-2 Years):	<ul style="list-style-type: none"> <li>• Electrical Upgrades (Phases 1-5)</li> <li>• Flooring Replacement (Phases 1-5)</li> <li>• HVAC Upgrades (Phases 1-5)</li> <li>• Auditorium Addition (w/ Storm Shelter)</li> </ul>
Priority 2 (5-10 Years):	<ul style="list-style-type: none"> <li>• Interior Renovations (Phases 1-5)</li> <li>• Plumbing Upgrades (Phases 1-5)</li> <li>• Roof Replacement (Phases 1-4)</li> <li>• Junior Varsity Baseball / Softball Field</li> <li>• Additional Storm Water / Site Work</li> </ul>
Priority 3 (10-20 Years):	<ul style="list-style-type: none"> <li>• Security System Upgrades (Cameras &amp; Alarms)</li> <li>• Window Replacement (Phases 1-4)</li> </ul>
Long Range Planning (Options for Future Growth):	<ul style="list-style-type: none"> <li>• Classroom Wing Addition (12 classrooms, toilets)</li> </ul>

**FRANCIS HOWELL  
NORTH HIGH SCHOOL  
OPTION 1  
(Additions and Renovations)**



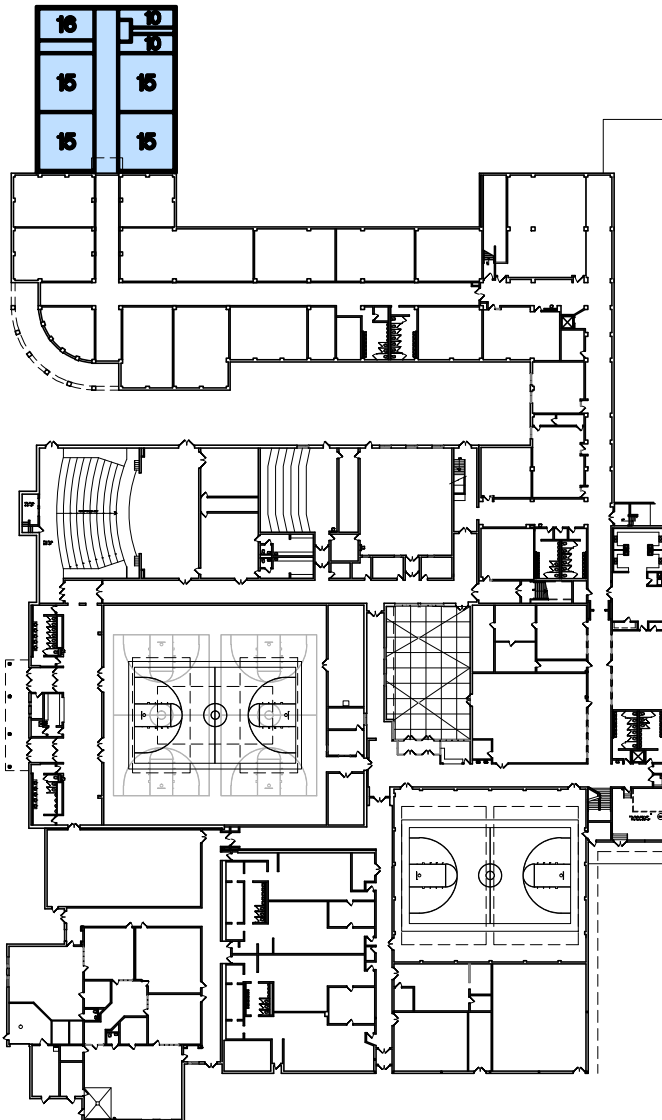
REVISION DATES	



Francis Howell North High School - Master Floor Plan (Main Level)

5.002

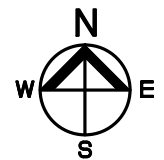
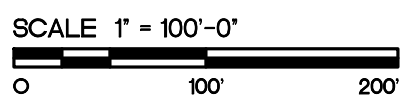
REVISION DATES	



MASTER PLAN LEGEND	
Priority 1 (1-2 Years):	<ul style="list-style-type: none"> <li>• Electrical Upgrades (Phases 1-5)</li> <li>• Flooring Replacement (Phases 1-5)</li> <li>• HVAC Upgrades (Phases 1-5)</li> <li>• Auditorium Addition (w/ Storm Shelter)</li> </ul>
Priority 2 (5-10 Years):	<ul style="list-style-type: none"> <li>• Interior Renovations (Phases 1-5)</li> <li>• Plumbing Upgrades (Phases 1-5)</li> <li>• Roof Replacement (Phases 1-4)</li> <li>• Junior Varsity Baseball / Softball Field</li> <li>• Additional Storm Water / Site Work</li> </ul>
Priority 3 (10-20 Years):	<ul style="list-style-type: none"> <li>• Security System Upgrades (Cameras &amp; Alarms)</li> <li>• Window Replacement (Phases 1-4)</li> </ul>
Long Range Planning (Options for Future Growth):	<ul style="list-style-type: none"> <li>• Classroom Wing Addition (12 classrooms, toilets)</li> </ul>

FLOOR PLAN LEGEND	
1.	AUDITORIUM (600 SEATS)
2.	STAGE
3.	SCENE SHOP
4.	DRESSING ROOM
5.	MAKE-UP ROOM
6.	GREEN ROOM
7.	DIRECTOR'S OFFICE
8.	STORAGE / MECH. / ELEC.
9.	ENTRANCE LOBBY
10.	COAT ROOM
11.	TOILET
12.	CONCESSIONS
13.	AUDITORIUM LOBBY
14.	AUDITORIUM HOUSE
15.	STANDARD CLASSROOM
16.	STAIR

**FRANCIS HOWELL  
NORTH HIGH SCHOOL  
OPTION 1  
(Additions and Renovations)**



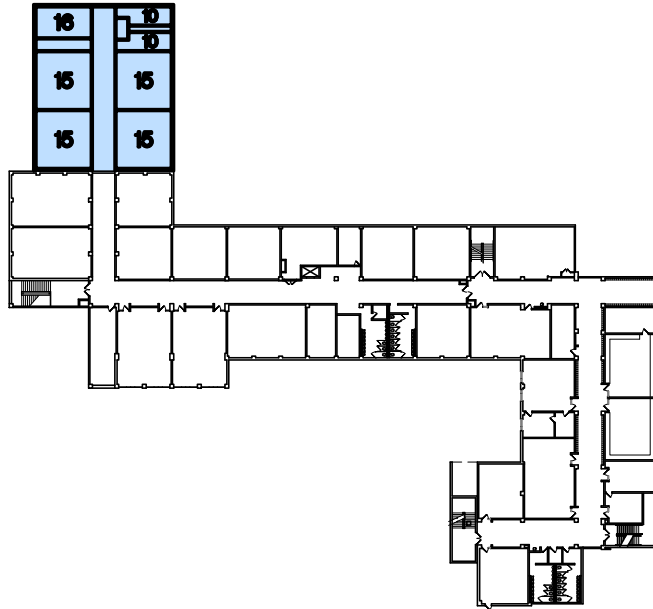
**Francis Howell North High School - Master Floor Plan (Lower Level)**

**5.003**

**HOENER ASSOCIATES, INC.**  
ARCHITECTS ST. LOUIS, MISSOURI  
ORIGIN DATE 12-10-18 PROJ. NO. 18-17A

**COMPREHENSIVE FACILITIES MASTER PLAN**  
FRANCIS HOWELL SCHOOL DISTRICT  
ST. CHARLES COUNTY, MISSOURI

REVISION DATES	



MASTER PLAN LEGEND	
Priority 1 (1-2 Years):	<ul style="list-style-type: none"> <li>• Electrical Upgrades (Phases 1-5)</li> <li>• Flooring Replacement (Phases 1-5)</li> <li>• HVAC Upgrades (Phases 1-5)</li> <li>• Auditorium Addition (w/ Storm Shelter)</li> </ul>
Priority 2 (5-10 Years):	<ul style="list-style-type: none"> <li>• Interior Renovations (Phases 1-5)</li> <li>• Plumbing Upgrades (Phases 1-5)</li> <li>• Roof Replacement (Phases 1-4)</li> <li>• Junior Varsity Baseball / Softball Field</li> <li>• Additional Storm Water / Site Work</li> </ul>
Priority 3 (10-20 Years):	<ul style="list-style-type: none"> <li>• Security System Upgrades (Cameras &amp; Alarms)</li> <li>• Window Replacement (Phases 1-4)</li> </ul>
Long Range Planning (Options for Future Growth):	<ul style="list-style-type: none"> <li>• Classroom Wing Addition (12 classrooms, toilets)</li> </ul>

FLOOR PLAN LEGEND	
1.	AUDITORIUM (600 SEATS)
2.	STAGE
3.	SCENE SHOP
4.	DRESSING ROOM
5.	MAKE-UP ROOM
6.	GREEN ROOM
7.	DIRECTOR'S OFFICE
8.	STORAGE / MECH. / ELEC.
9.	ENTRANCE LOBBY
10.	COAT ROOM
11.	TOILET
12.	CONCESSIONS
13.	AUDITORIUM LOBBY
14.	AUDITORIUM HOUSE
15.	STANDARD CLASSROOM
16.	STAIR

**FRANCIS HOWELL  
NORTH HIGH SCHOOL  
OPTION 1  
(Additions and Renovations)**

SCALE 1" = 100'-0"



Francis Howell North High School - Master Floor Plan (Upper Level)

5.004

**HOENER ASSOCIATES, INC.**  
ARCHITECTS ST. LOUIS, MISSOURI  
ORIGIN DATE 12-10-18 PROJ. NO. 18-17A

**COMPREHENSIVE FACILITIES MASTER PLAN**  
FRANCIS HOWELL SCHOOL DISTRICT  
ST. CHARLES COUNTY, MISSOURI

REVISION DATES	

